



KuMax

CS3U-335|340|345P

(1000 V / 1500 V)

With Canadian Solar's industry leading poly cell technology and the innovative LIC (Low Internal Current) module technology, we are now able to offer our global customers high power poly modules up to 345 W. The KuMax poly modules with a dimension of 2000 x 992 mm, close to our 72 cell MaxPower modules, have the following features:

MORE POWER



Low power loss in cell connection



Low NMOT: 42 ± 3 °C
Low temperature coefficient (Pmax): -0.38 % / °C



Better shading tolerance



High PTC rating of up to: 92.52 %

MORE RELIABLE



Lower hot spot temperature

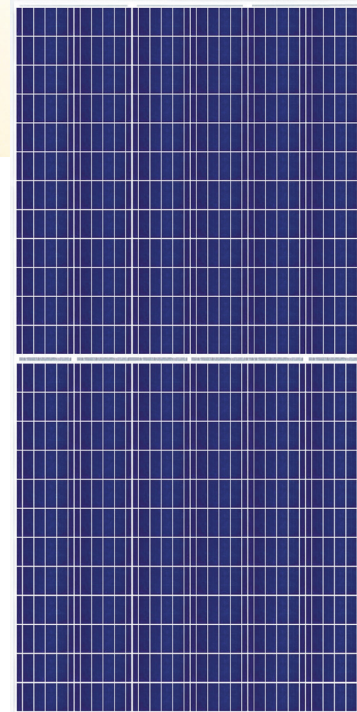


Minimizes micro-cracks



Heavy snow load up to 5400 Pa,
wind load up to 2400 Pa

*For detail information, please refer to Installation Manual.



power output warranty



product warranty on materials and workmanship

MANAGEMENT SYSTEM CERTIFICATES*

ISO 9001:2008 / Quality management system

ISO 14001:2004 / Standards for environmental management system

OHSAS 18001:2007 / International standards for occupational health & safety

PRODUCT CERTIFICATES*

IEC 61215 / IEC 61730: VDE / CE

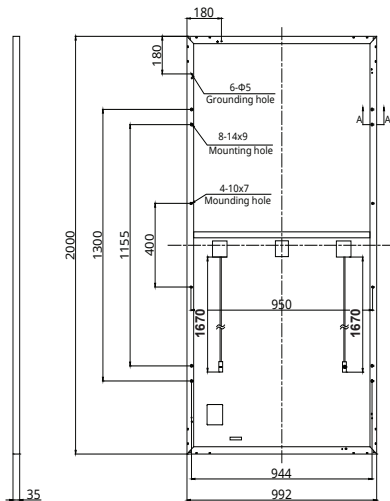
UL 1703: CSA

* As there are different certification requirements in different markets, please contact your local Canadian Solar sales representative for the specific certificates applicable to the products in the region in which the products are to be used. If module installations are to deviate from the guidance specified in our installation manual, please contact your local Canadian Solar technical representatives.

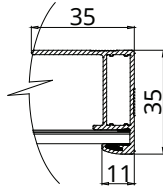
CANADIAN SOLAR (USA), INC. is committed to providing high quality solar products, solar system solutions and services to customers around the world. As a leading PV project developer and manufacturer of solar modules with over 26 GW deployed around the world since 2001, Canadian Solar Inc. (NASDAQ: CSIQ) is one of the most bankable solar companies worldwide.

ENGINEERING DRAWING (mm)

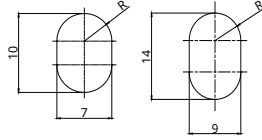
Rear View



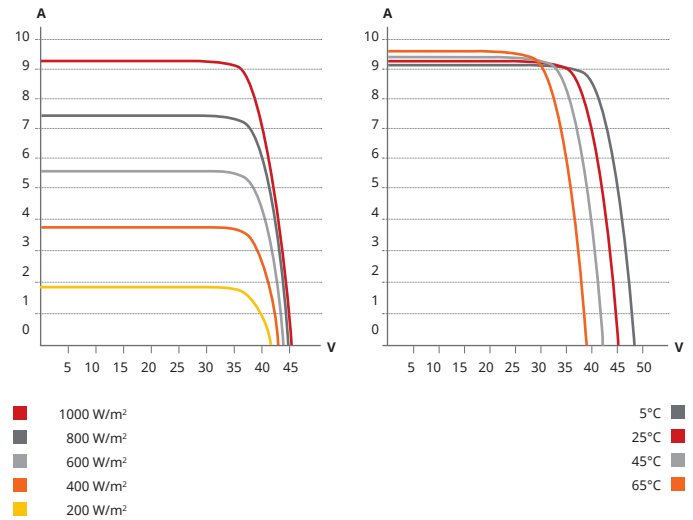
Frame Cross Section A-A



Mounting Hole



CS3U-340P / I-V CURVES



ELECTRICAL DATA | STC*

| CS3U | 335P | 340P | 345P |
|-------------------------------------------|-----------------------------------------|--------|--------|
| Nominal Max. Power (P _{max}) | 335 W | 340 W | 345 W |
| Opt. Operating Voltage (V _{mp}) | 38.2 V | 38.4 V | 38.6 V |
| Opt. Operating Current (I _{mp}) | 8.77 A | 8.86 A | 8.94 A |
| Open Circuit Voltage (V _{oc}) | 45.7 V | 45.9 V | 46.1 V |
| Short Circuit Current (I _{sc}) | 9.28 A | 9.36 A | 9.44 A |
| Module Efficiency | 16.89% | 17.14% | 17.39% |
| Operating Temperature | -40°C ~ +85°C | | |
| Max. System Voltage | 1500V (IEC/UL) or 1000V (IEC/UL) | | |
| Module Fire Performance | TYPE 1 (UL 1703) or CLASS C (IEC 61730) | | |
| Max. Series Fuse Rating | 30 A | | |
| Application Classification | Class A | | |
| Power Tolerance | 0 ~ + 5 W | | |

* Under Standard Test Conditions (STC) of irradiance of 1000 W/m², spectrum AM 1.5 and cell temperature of 25°C.

MECHANICAL DATA

| Specification | Data |
|------------------------|---------------------------------------------|
| Cell Type | Poly-crystalline, 156.75 X 78.38 mm |
| Cell Arrangement | 144 [2 X (12 X 6)] |
| Dimensions | 2000 X 992 X 35 mm (78.7 X 39.1 X 1.38 in) |
| Weight | 22.5 kg (49.6 lbs) |
| Front Cover | 3.2 mm tempered glass |
| Frame | Anodized aluminium alloy, crossbar enhanced |
| J-Box | IP68, 3 diodes |
| Cable | 4 mm ² (IEC), 12 AWG (UL) |
| Cable Length | 1670 mm (65.7 in) |
| Connector | T4 series |
| Per Pallet | 30 pieces |
| Per Container (40' HQ) | 660 pieces |

ELECTRICAL DATA | NMOT*

| CS3U | 335P | 340P | 345P |
|-------------------------------------------|--------|--------|---------|
| Nominal Max. Power (P _{max}) | 249 W | 252 W | 256 W |
| Opt. Operating Voltage (V _{mp}) | 35.3 V | 35.5 V | 35.7 V |
| Opt. Operating Current (I _{mp}) | 7.04 A | 7.11 A | 7.18 A |
| Open Circuit Voltage (V _{oc}) | 42.7 V | 42.9 V | 43.1 V |
| Short Circuit Current (I _{sc}) | 7.49 A | 7.55 A | 7.62 A* |

Under Nominal Module Operating Temperature (NMOT), irradiance of 800 W/m², spectrum AM 1.5, ambient temperature 20°C, wind speed 1 m/s.

TEMPERATURE CHARACTERISTICS

| Specification | Data |
|---------------------------------------------|--------------|
| Temperature Coefficient (P _{max}) | -0.38 % / °C |
| Temperature Coefficient (V _{oc}) | -0.31 % / °C |
| Temperature Coefficient (I _{sc}) | 0.05 % / °C |
| Nominal Module Operating Temperature | 42 ± 3°C |

PARTNER SECTION



* The specifications and key features contained in this datasheet may deviate slightly from our actual products due to the on-going innovation and product enhancement. Canadian Solar Inc. reserves the right to make necessary adjustment to the information described herein at any time without further notice.